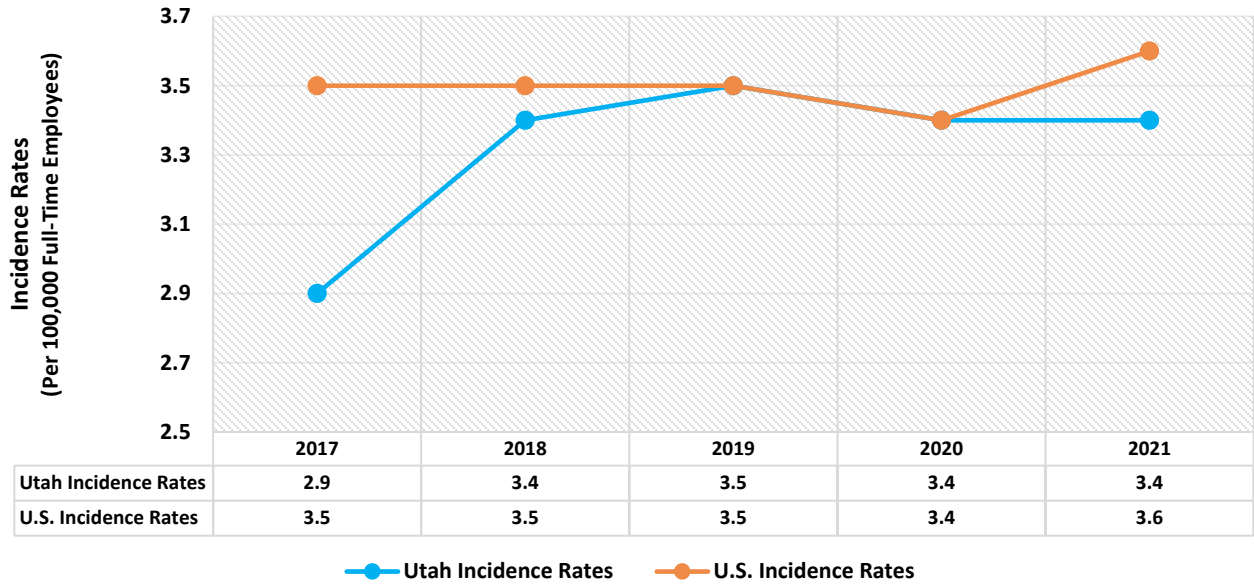
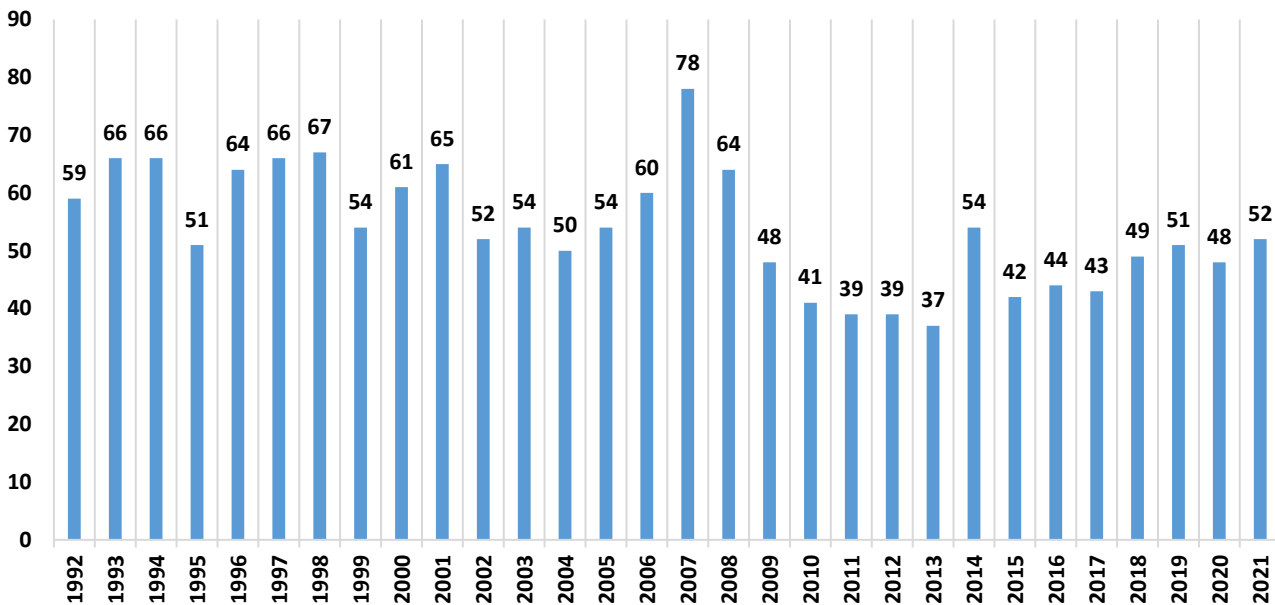


Overall Fatal Incidence Rates - Utah vs U.S.

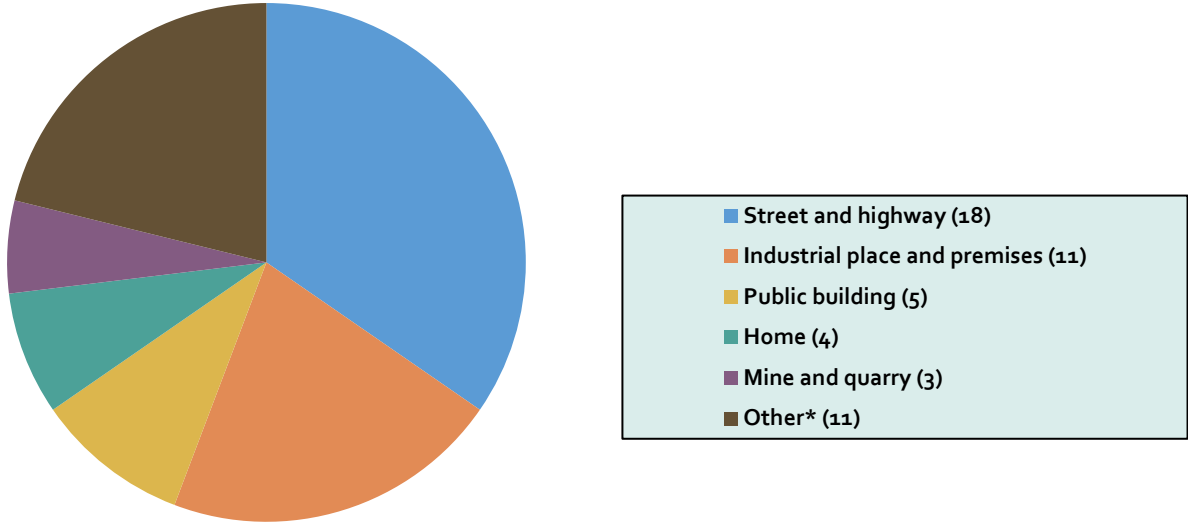


1992-2021 Utah Work Related Fatalities

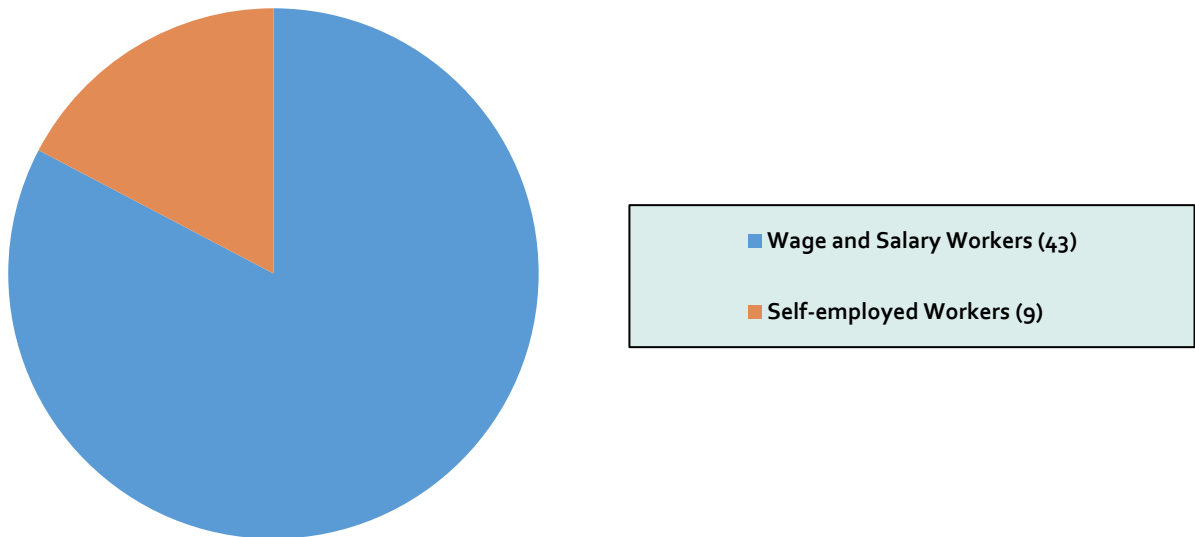


Source: U.S. BLS Census of Fatal Occupational Injuries

2021 Fatal Work Injuries by Location
[52 Total Cases]



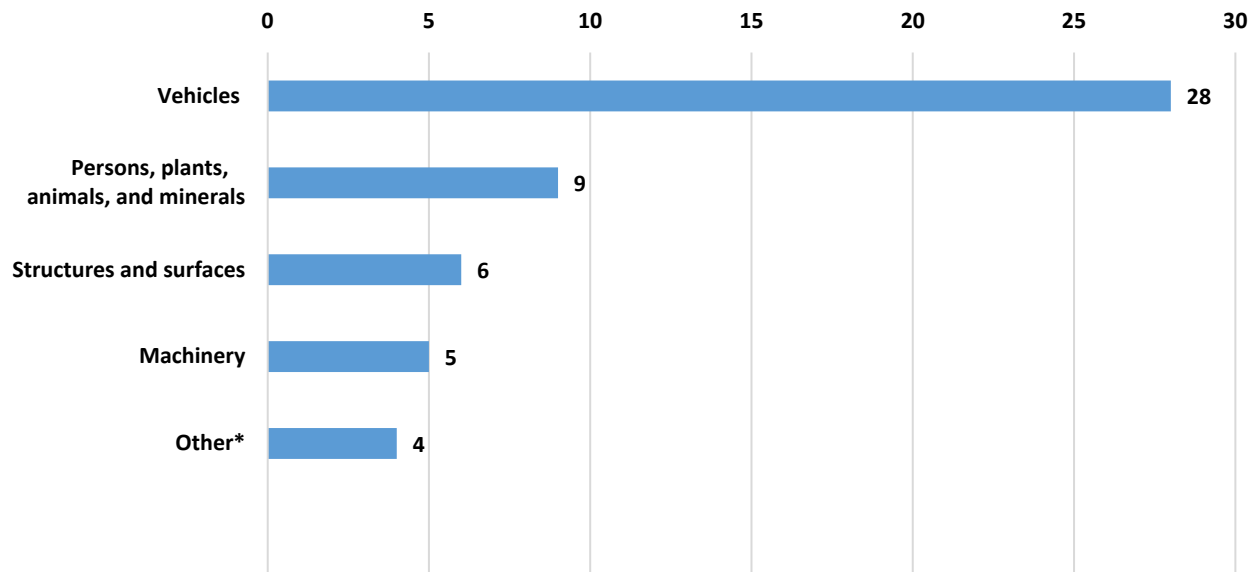
2021 Fatal Work Injuries by Type of Employee Status
[52 Total Cases]



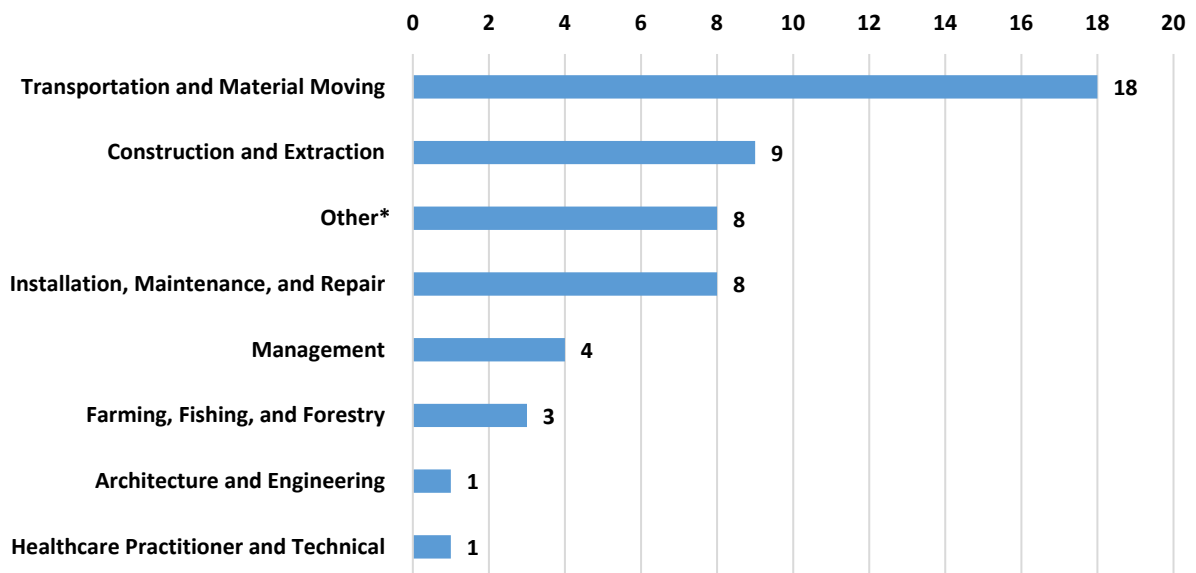
**Other includes data that may not be available for specific categories.*

Source: U.S. BLS Census of Fatal Occupational Injuries

2021 Fatalities by Source [52 Total Cases]

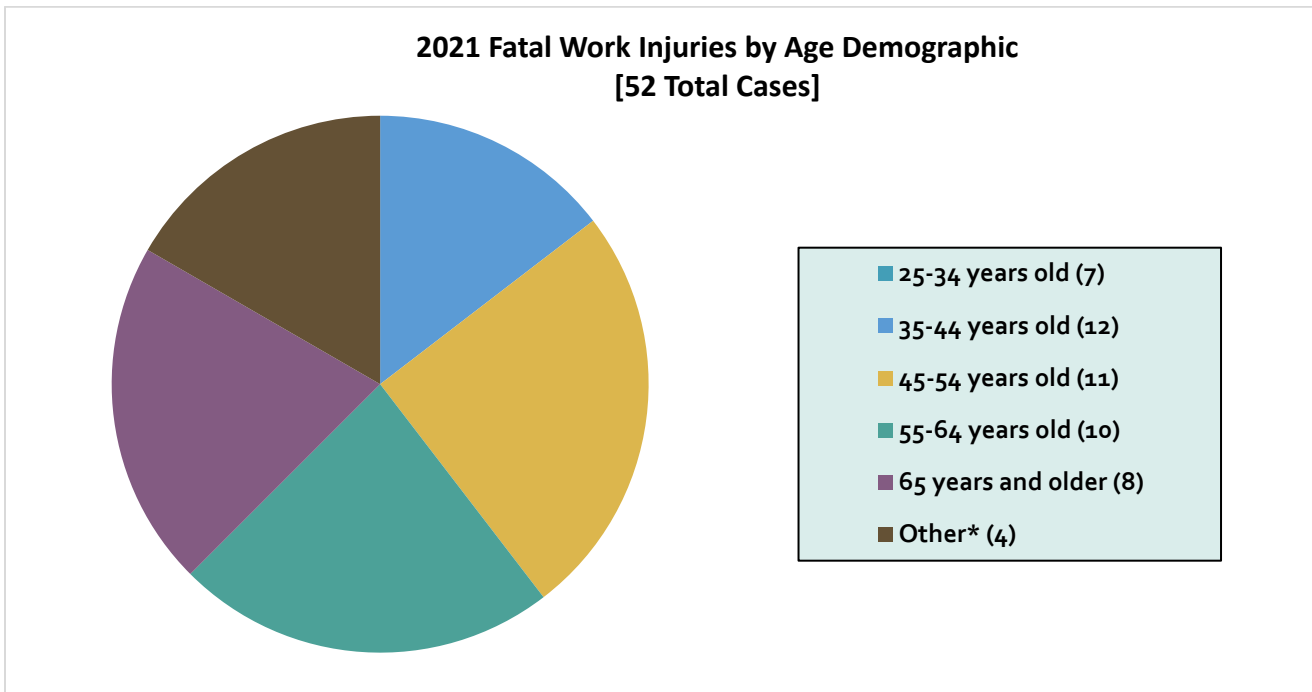
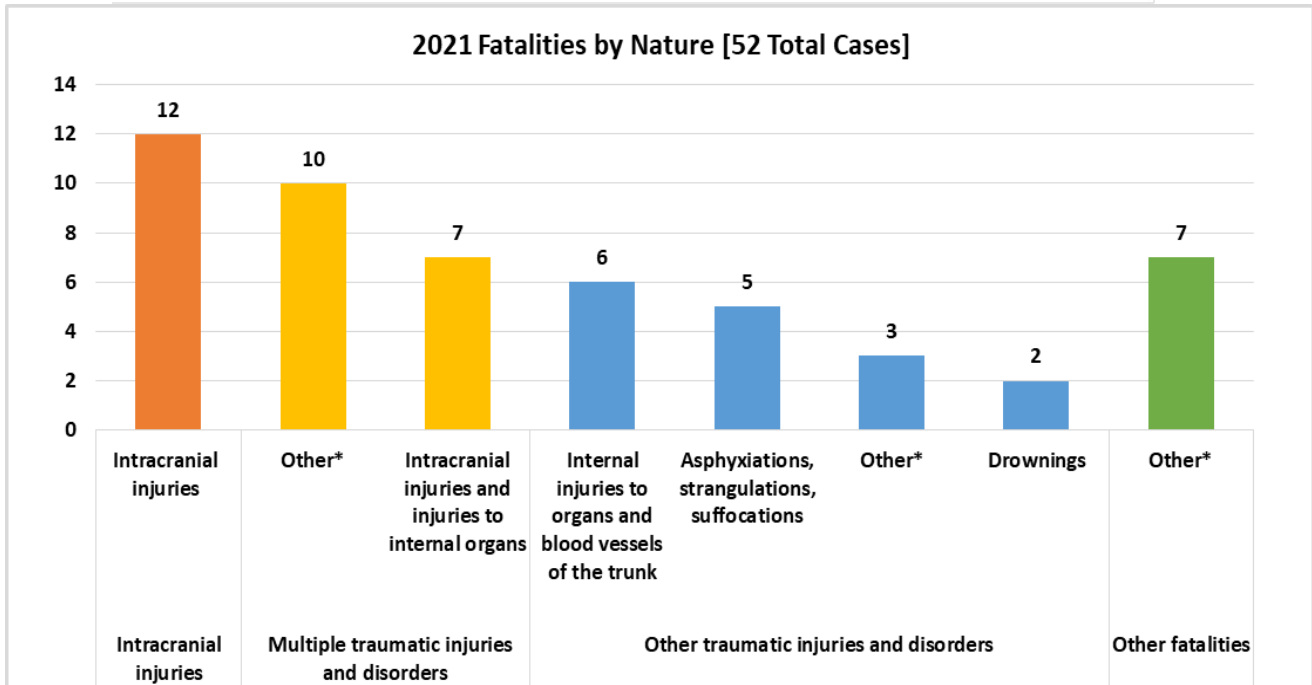


2021 Fatalities by Occupation [52 Total Cases]



**Other includes data that may not be available for specific categories.*

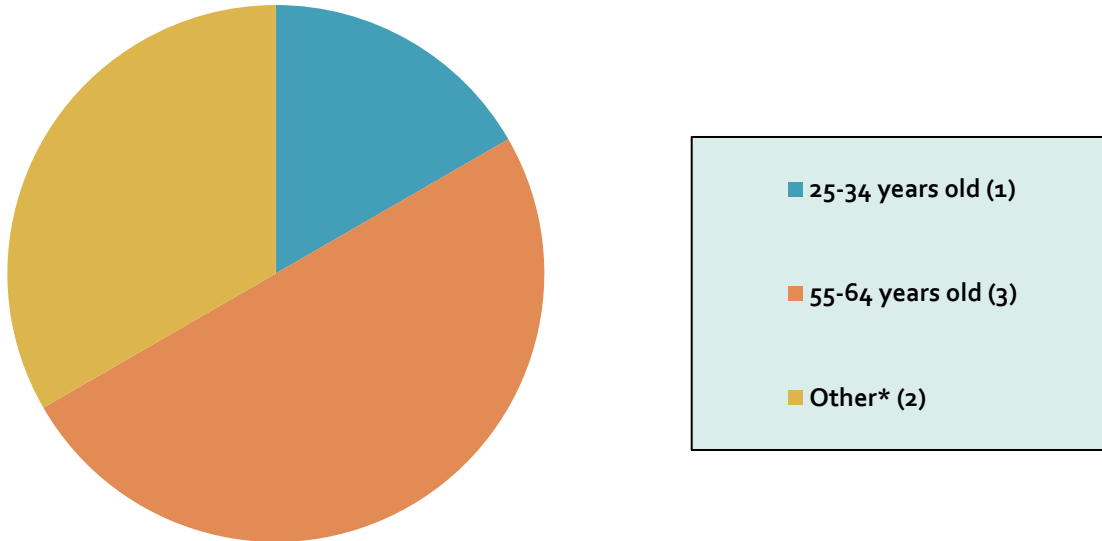
Source: U.S. BLS Census of Fatal Occupational Injuries



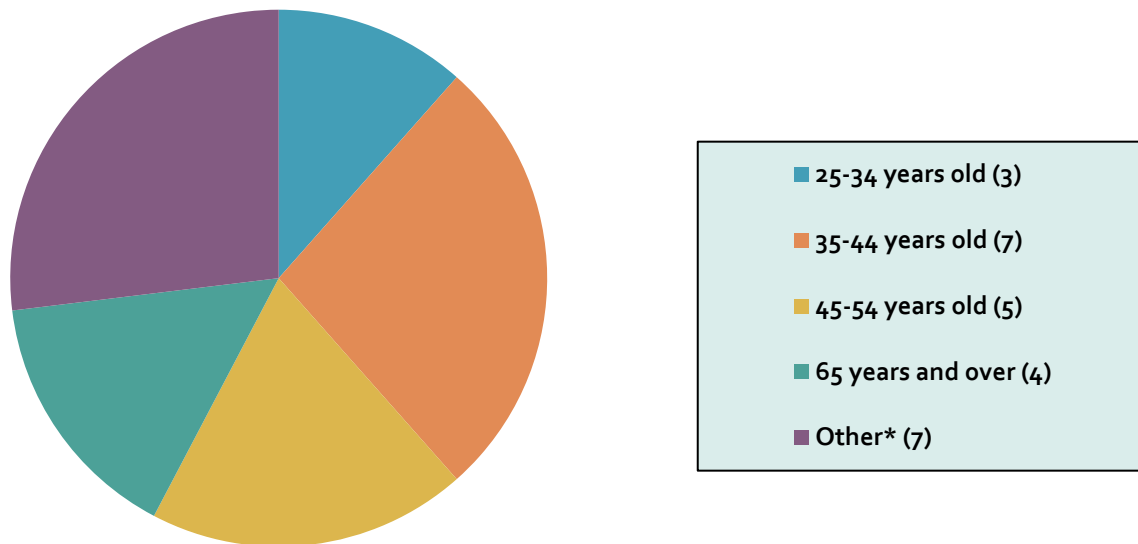
**Other includes data that may not be available for specific categories.*

Source: U.S. BLS Census of Fatal Occupational Injuries

**2021 Falls, Slips, Trips Fatalities by Age Demographic
[6 Total Cases]**



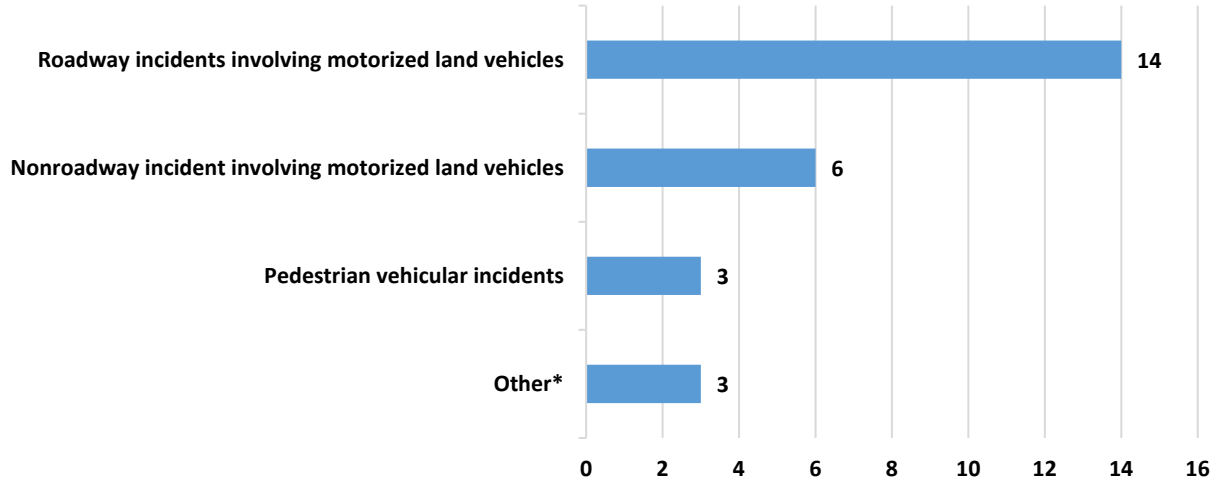
**2021 Transportation Fatalities by Age Demographic
[26 Total Cases]**



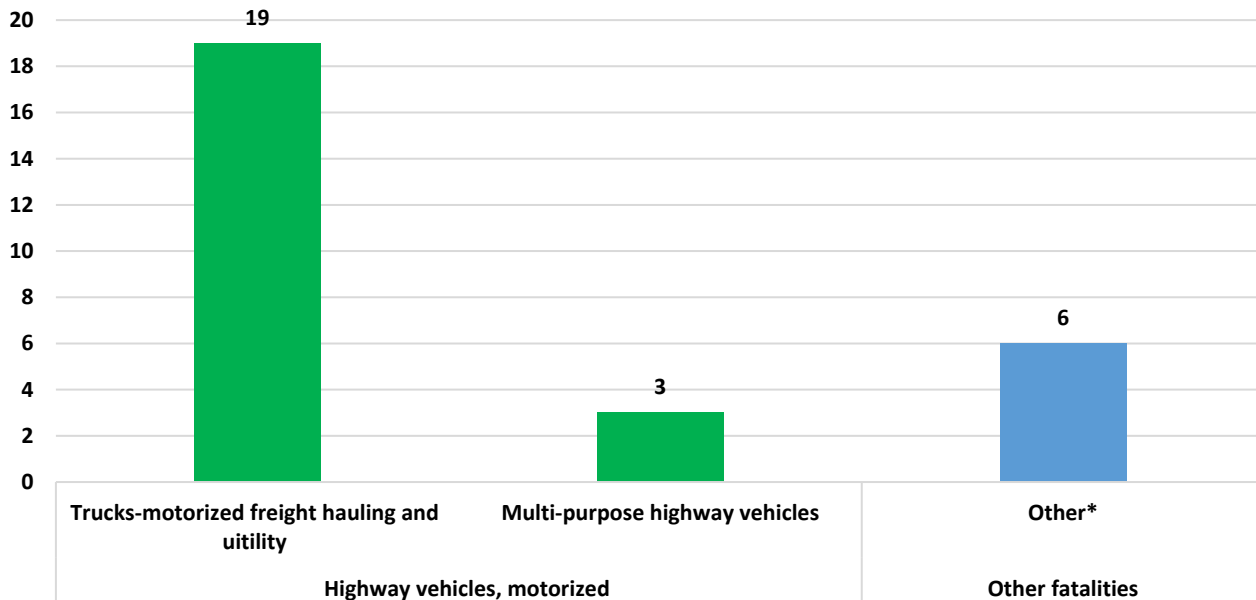
**Other includes data that may not be available for specific categories.*

Source: U.S. BLS Census of Fatal Occupational Injuries

2021 Transportation Fatalities [26 Total Cases]



Fatalities by Vehicle Type [28 Total Cases]



**Other includes data that may not be available for specific categories.*

Source: U.S. BLS Census of Fatal Occupational Injuries